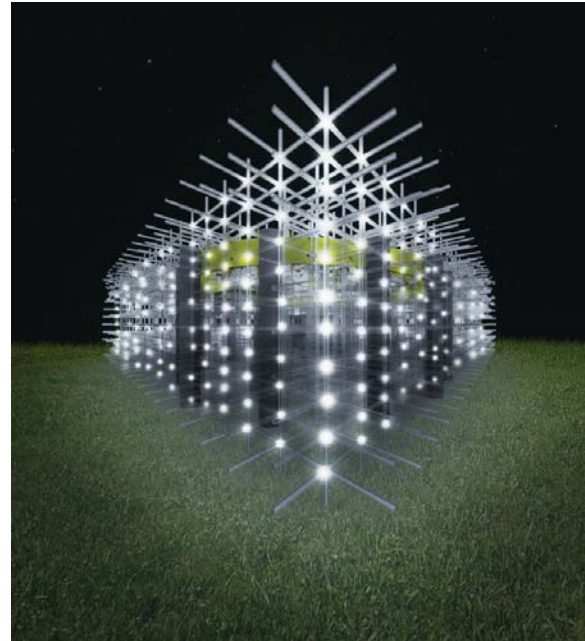


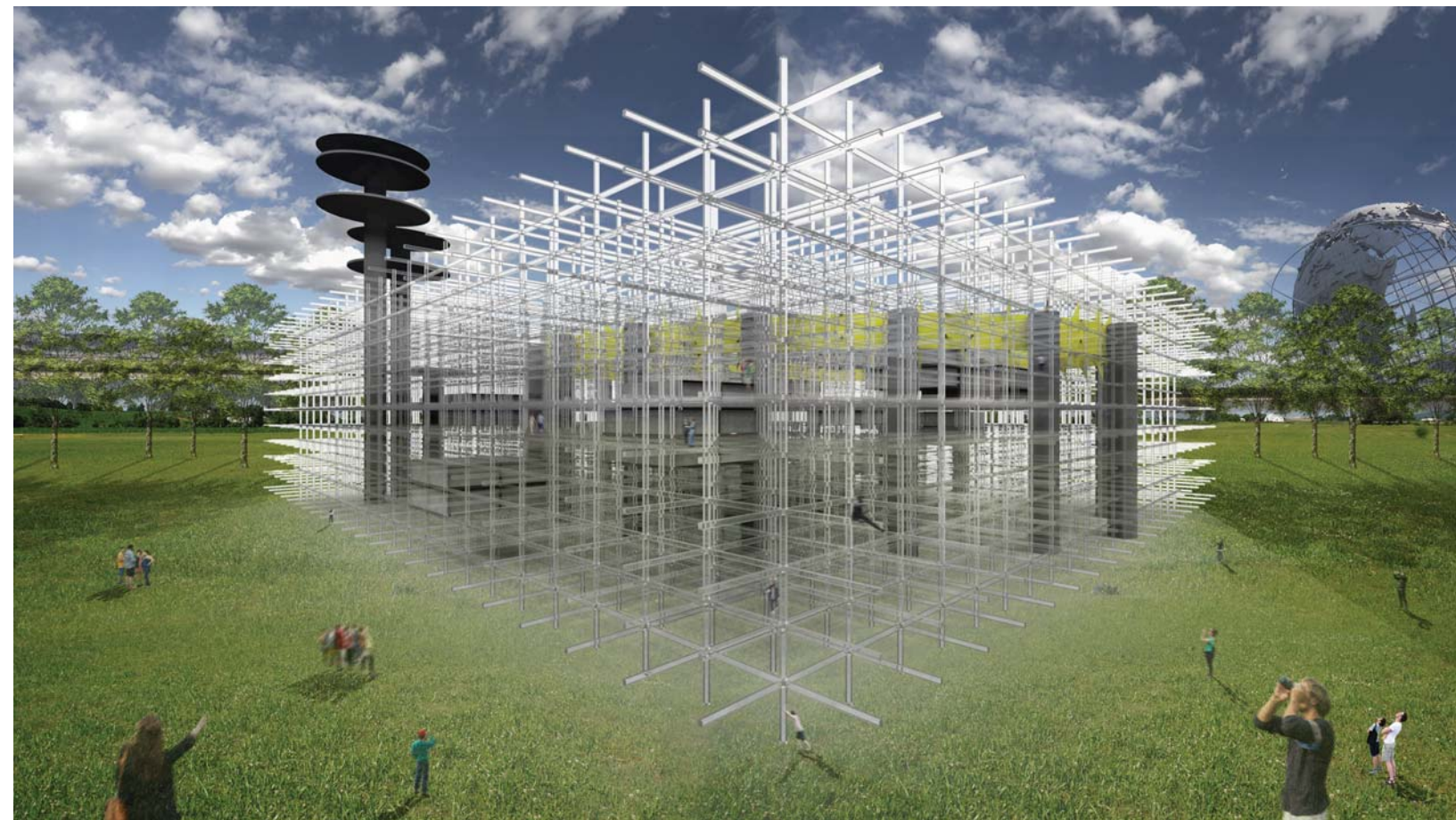
Site Plan with Proposed New Landscaping

THE APPARITION

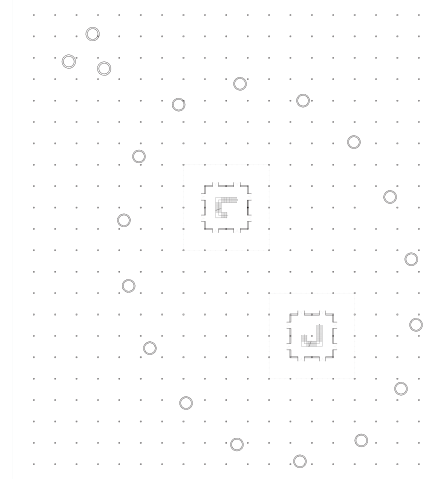
NEW YORK STATE PAVILION
ADAPTIVE REUSE



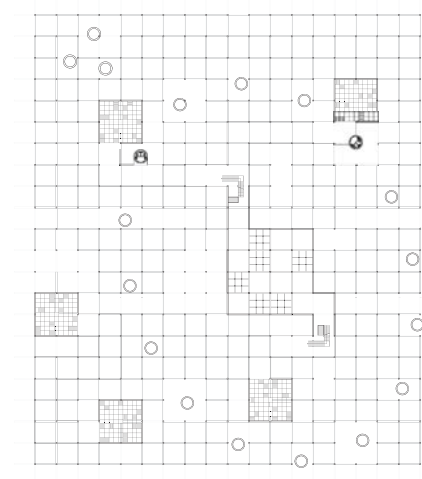
Night LED Render



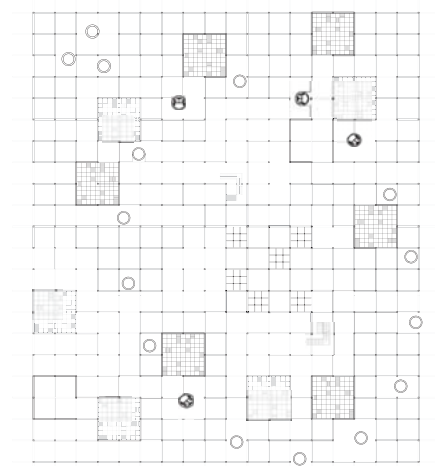
Apparition Day Render



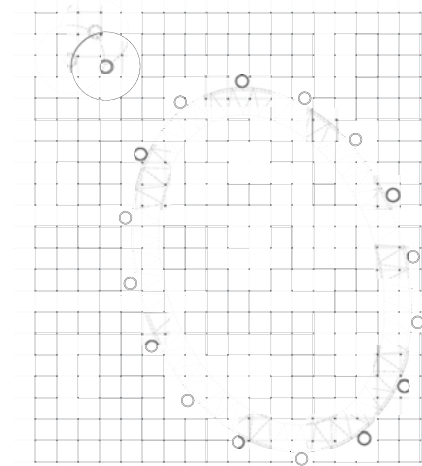
Plan at 4'



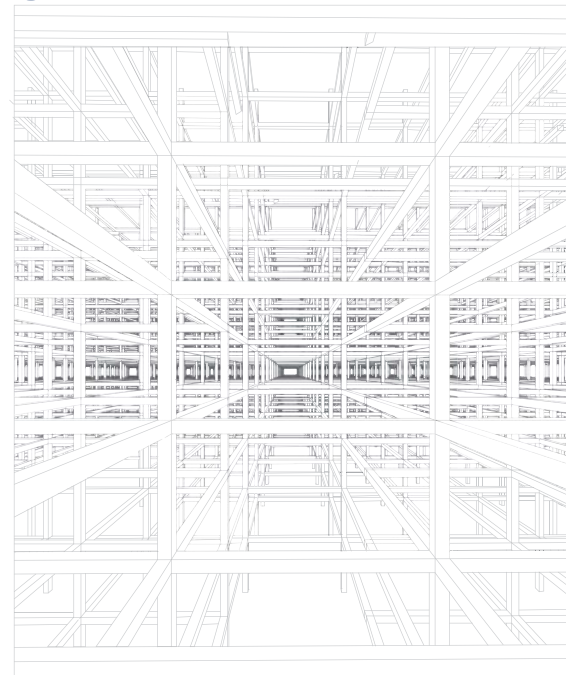
Plan at 14'



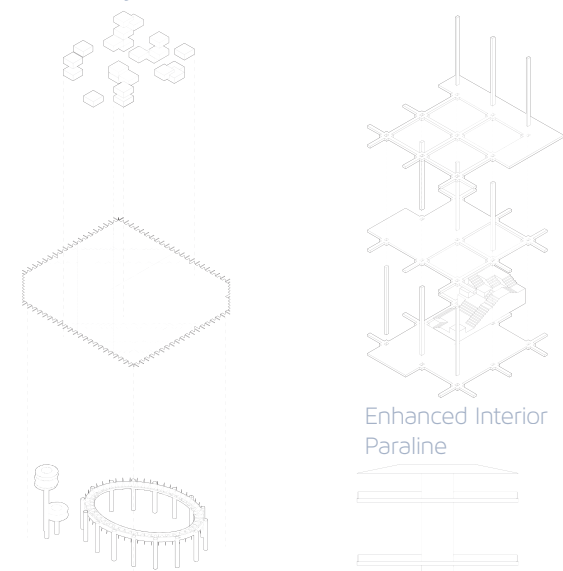
Plan at 54'



Plan at 84'

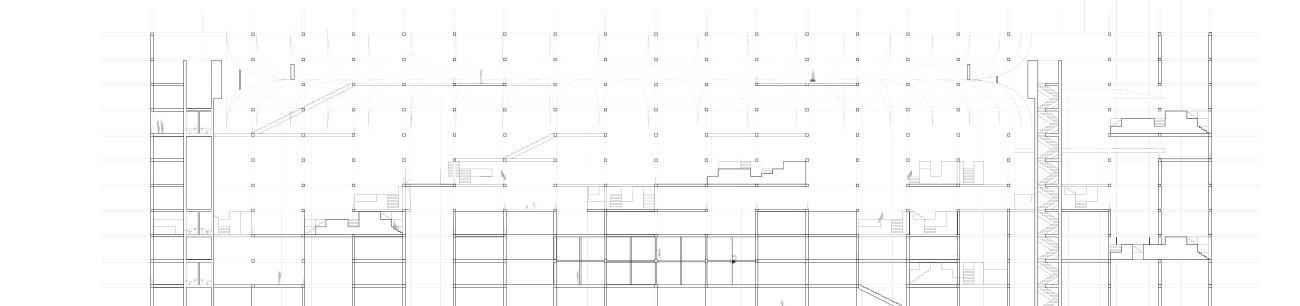


Scaffolding Experiential View

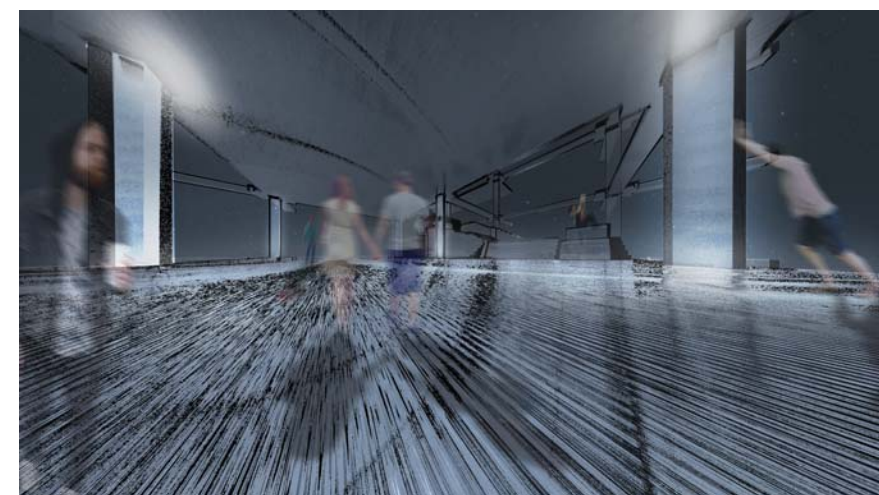


Apparition + Pavilion Paraline

Enhanced Interior Paraline



Section AA



Edge of Scaffolding Night Condition



Center of Scaffolding Day Condition

THE APPARITION

This project, like an apparition, is a folly that plays with space, erasures, light, and transparencies. The viewers are meant to see the original pavilion at times and at other angles only see the new addition. The original pavilion is frozen inside the scaffolding grid. By maintaining and providing an updated paint job, the original pavilion becomes preserved in time. The brighter colors pop and stand out at different times of day.

There are erasures located throughout the project that allow for circulation through the pavilion as well as providing seating. The gridded structure is separated twenty feet horizontally and ten feet vertically. The scaffolding creates light wells, bringing in light to all parts. The transparency of the structure is meant to add a new layer to experience.

From far away, it appears as if visitors are floating in space. The layers of clear poly carbonate and light alter the space constantly. If the visitor ends in the same spot he or she began their experience, the space will have altered in time and will appear different. At night the pavilion lights up and becomes a visual 3d canvas for artists. LED's are to be installed in the intersections of the rods that can change with color. These LED's also help light the way and expose a light texture applied to the ground that becomes visible at night to allow for safety and shows visitors in which direction they are walking in.

The grid runs true north-south and east-west, to contrast the orientation of the pavilion. When approaching it from the north east side, a new forest of trees covers up both structures at certain times. Viewers get glimpses of what lies ahead. On the southwest side the pavilion sits on a grand lawn and acknowledges its monumentality in size. In this manner, even the way it is approached can change constantly.